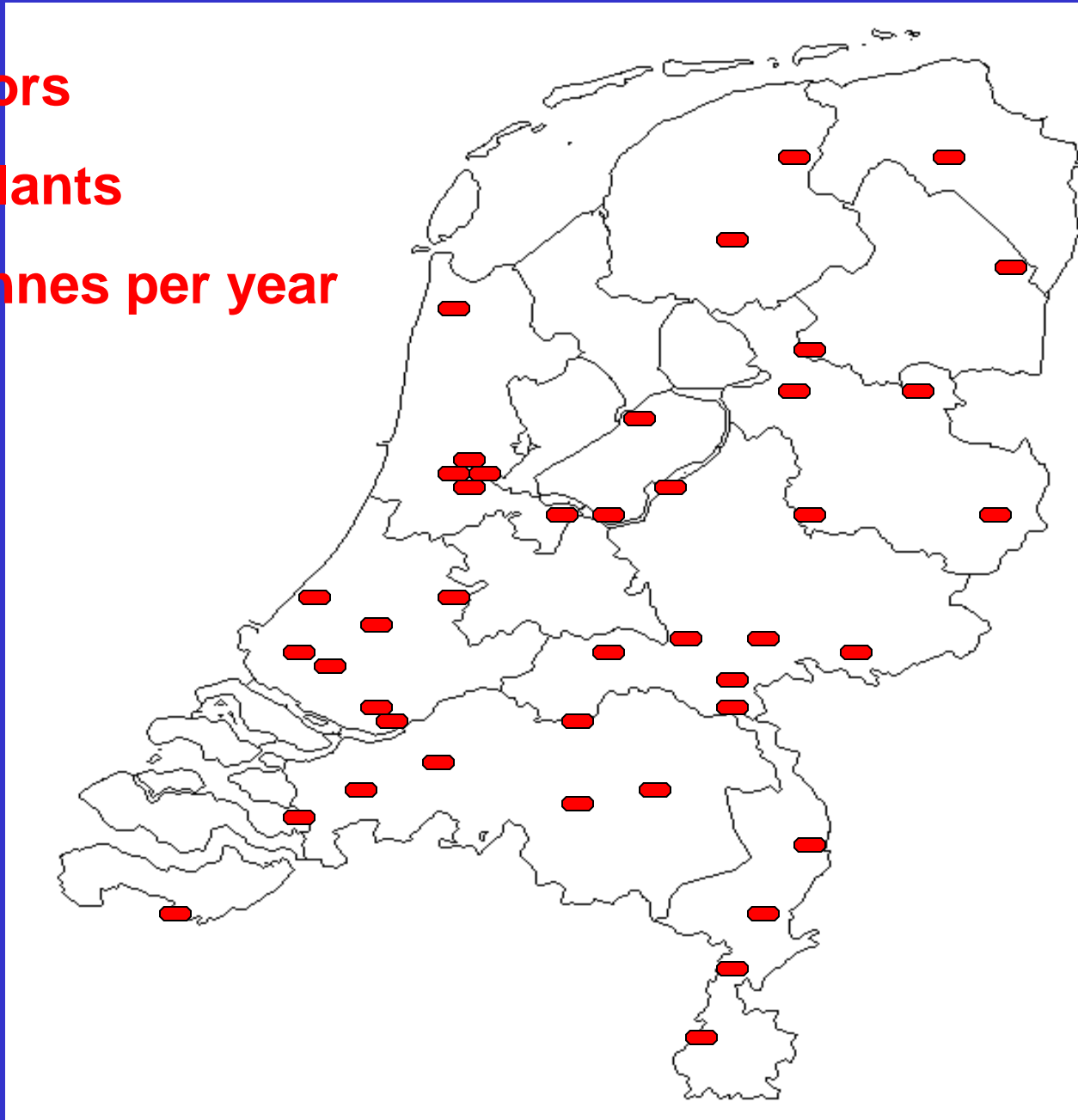


20 contractors

40 mixing plants

9 million tonnes per year



Topics

- Promoting application of asphalt
- Technical specs and regulations

Technical Committee

- Environmental policy and regulations

Committee on Environment

Technical specs and regulations

- European harmonisation
- CE-marking
- Introduction
of functional specifications

~~Marshall properties~~

Environmental policy and regulations

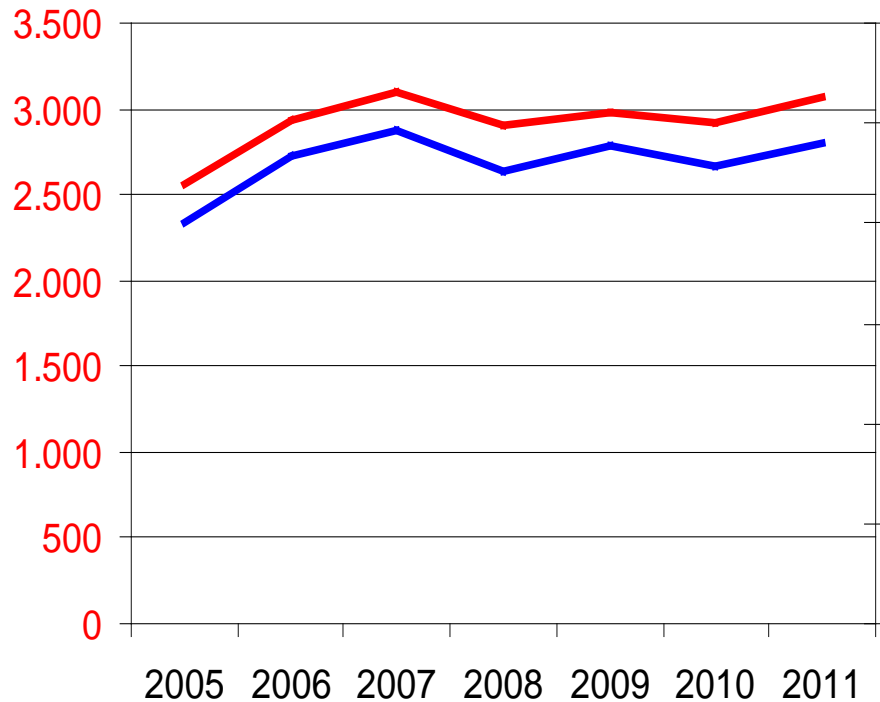
- Energy consumption mixing plants
- Emissions and ETS
- Recycling
- Dangerous Substances
- Life Cycle Analyses
- Green procurement
- Warm Asphalt

Long term agreement on Energy efficiency

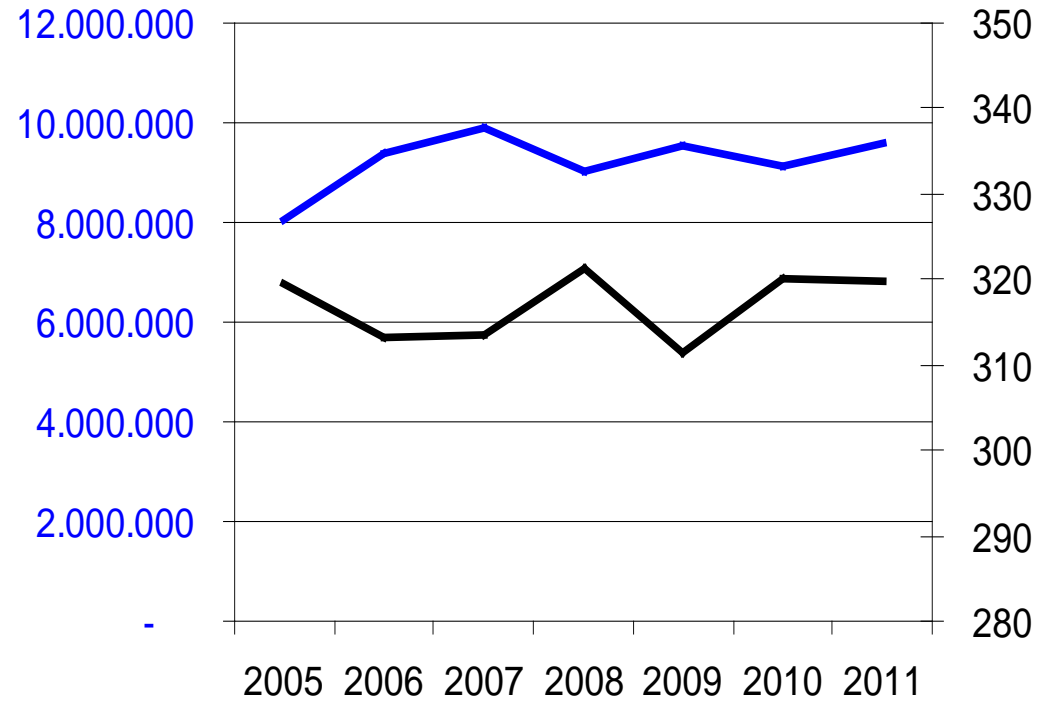
Since 1995

- New program 2005 – 2020**
- Goal: 2% per year improvement
energy eff.**
- Every mixing plant: 4 year program
2013 - 2016**
- Yearly monitoring**
- Energy management system**

trends

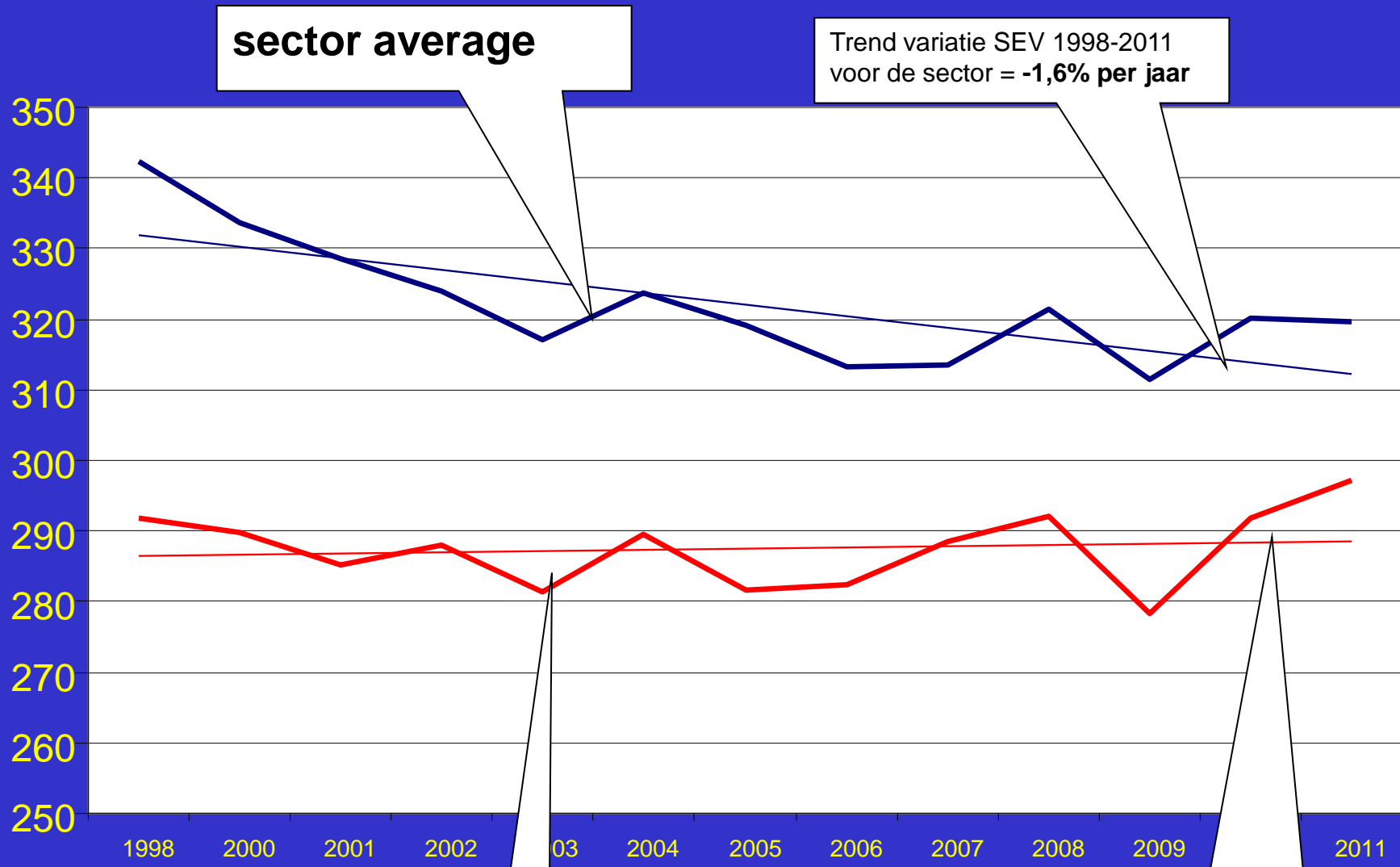


— Energieverbruik [TJ/jaar] — Productie [ton/jaar]



— Productie [ton/jaar] — SEV [MJ/ton]

MJ / ton asfalt



sector average

Trend variatie SEV 1998-2011
voor de sector = -1,6% per jaar

TOP 6

Trend variatie SEV 1998-2011
voor de Top 6 = +0,2% per jaar