



German Asphalt Industry

Overview and future trends

Jürgen Reifig

Deutscher Asphaltverband e.V.

Classification of German roads

Motorways	1,9 %	72 % asphalt
federal roads	6,7 %	99 % asphalt
state roads	14,1 %	100 % asphalt
local roads	77,3 %	mainly asphalt

Total length of German roads: 650.000 km

Customers of the asphalt industry

- contractor
- federal government
- states
- local authorities

⇒ couple of 1000 road constructing companies, most of them very small

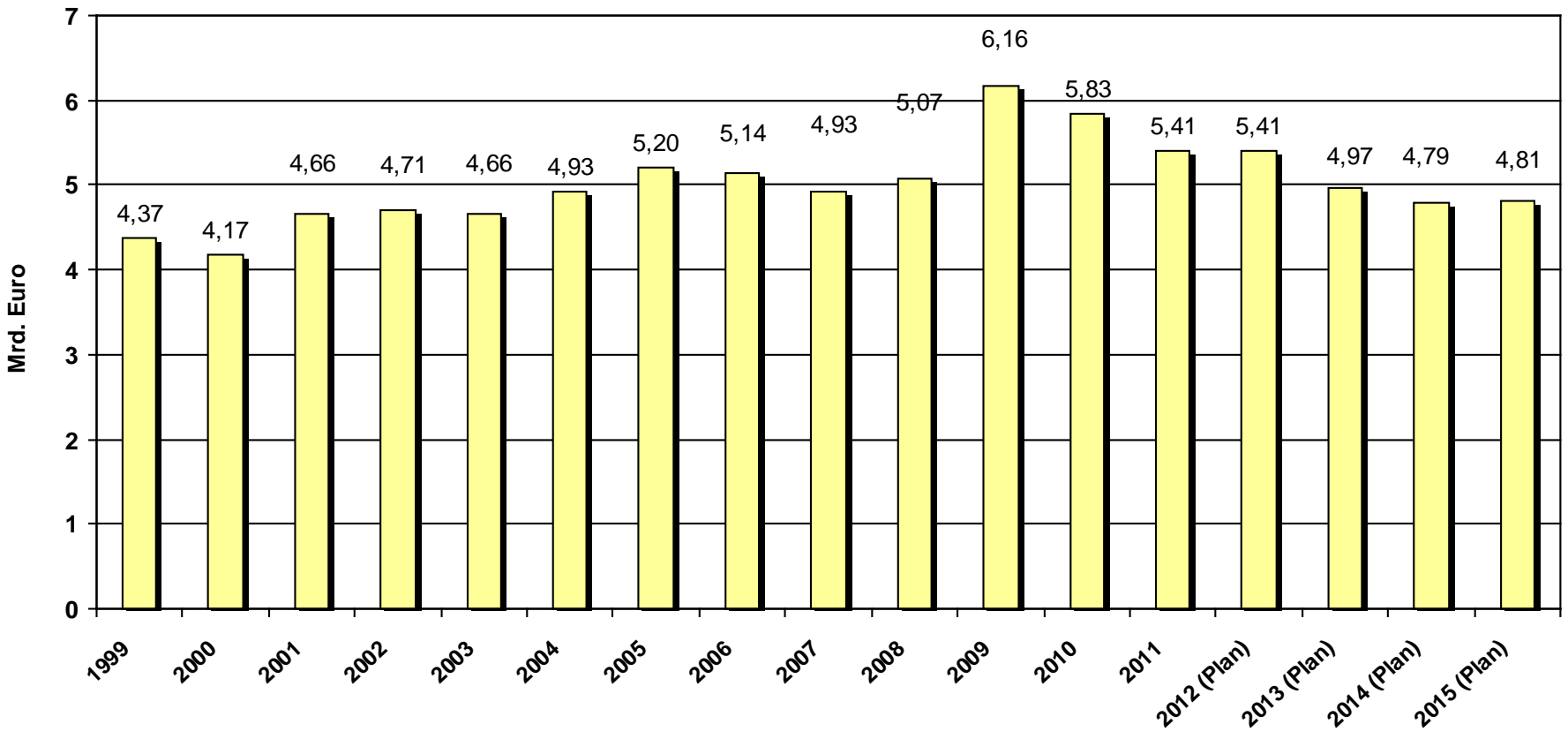
Financing of Road projects

Taxes from road traffic

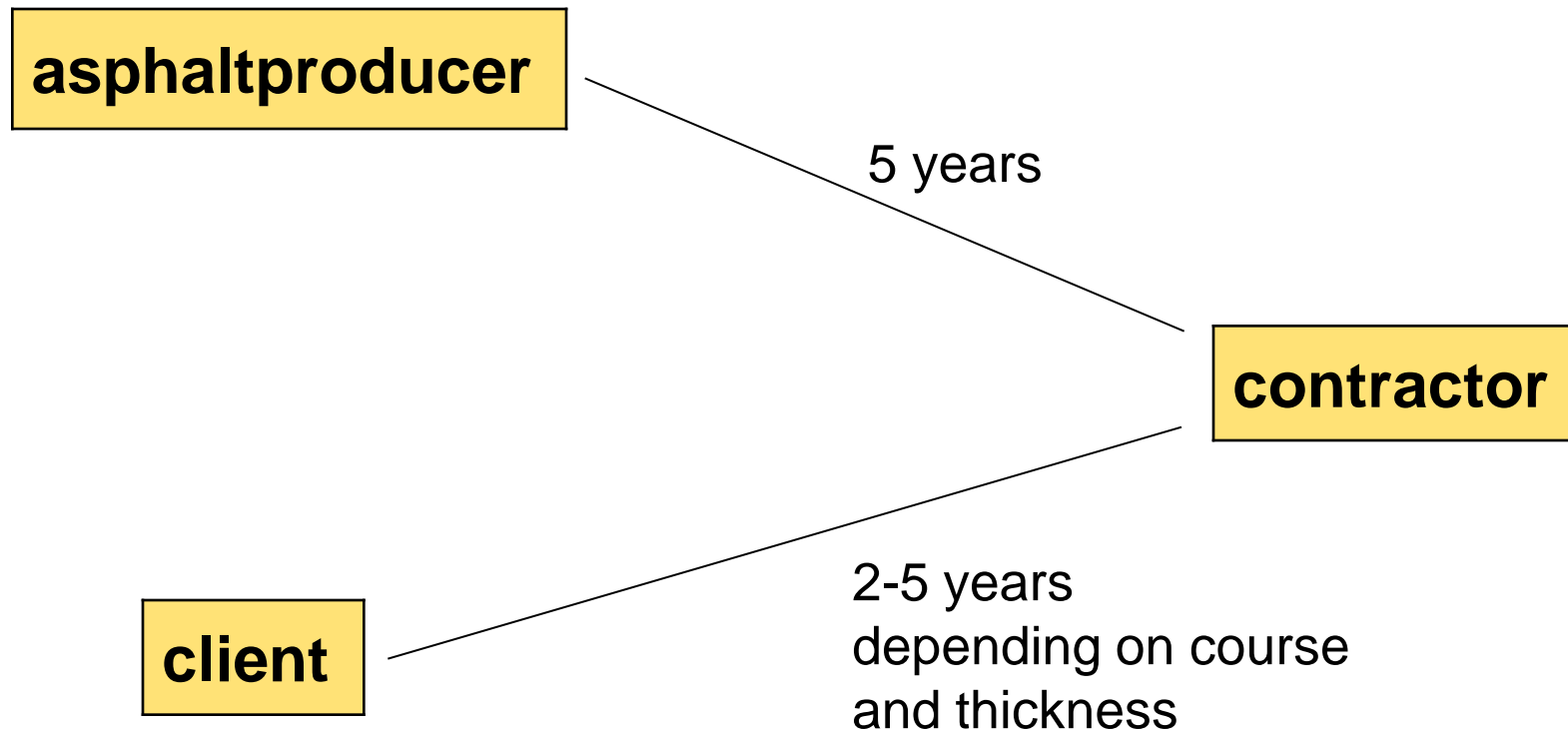
(tax for cars, petrol, VAT, toll roads): 53 Mrd. €

Public expenses for roads: 17 Mrd. €

Expenses of the Federal State for Roads

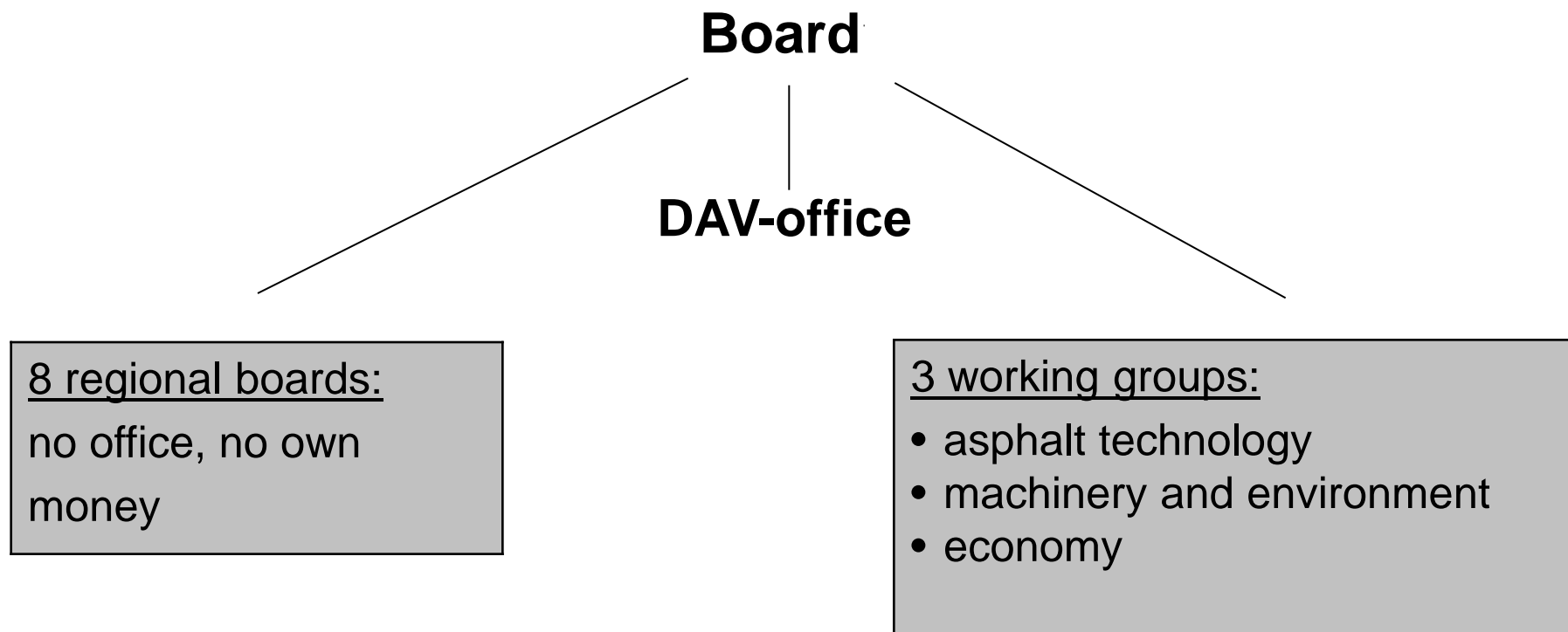


Garantie

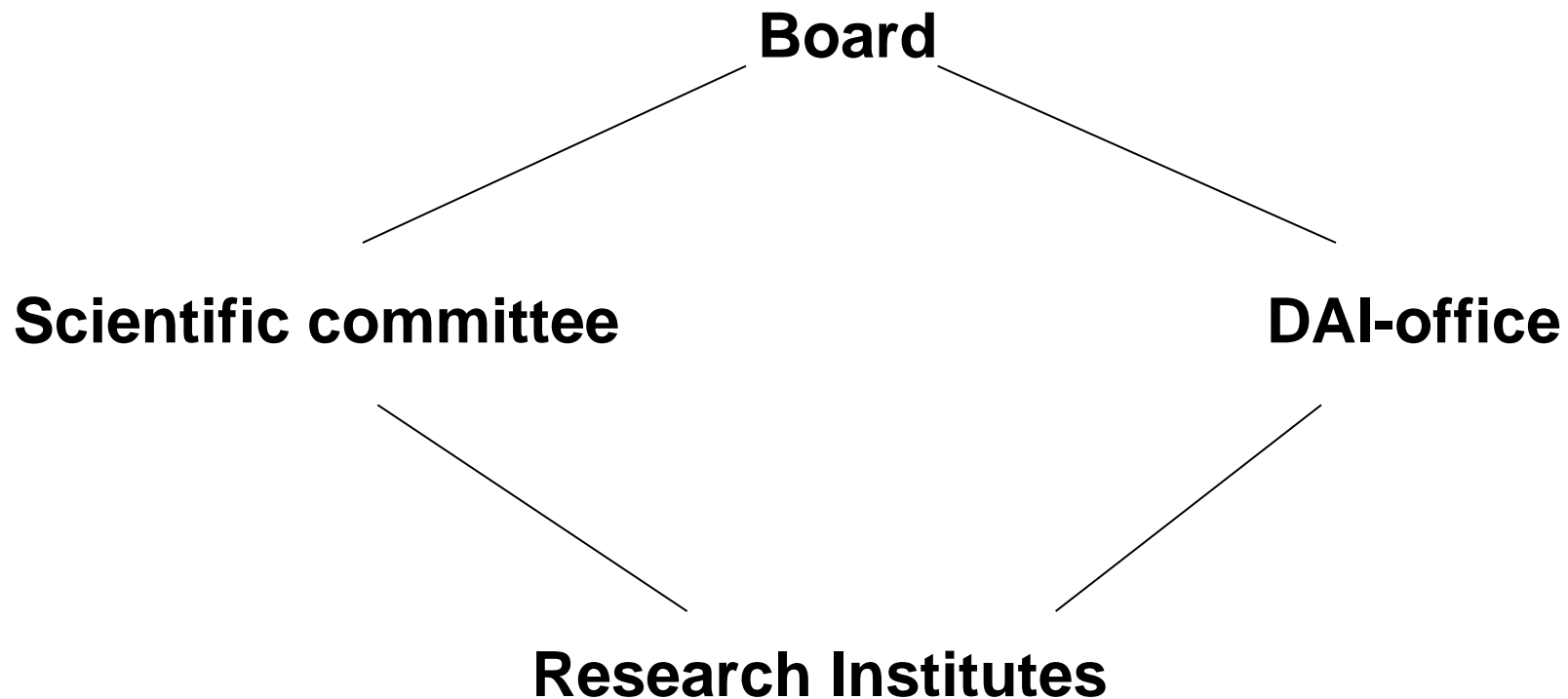


DAV

(German Asphalt Pavement Association)



DAI (German Asphalt Institute)



Members of DAV

ca. 190 asphalt producing and/or laying companies
with ca. 460 mixing plants (from 650 in total)

ca. 100 associated members like laboratories, mixing
plant manufacturers, bitumen suppliers ...

Year	Asphalt-production	Recycling in Million tons and percent	Percentage of Recyclingmaterial in Production
	Million tons	Million tons	in %
2000	65	12 (from ~ 15, means ~ 80 %)	18,5
2001	63	12 (from ~ 15, means ~ 80 %)	19
2002	58	11,5 (from ~ 14, means ~ 82 %)	20
2003	55	11,5 (from ~ 14, means ~ 82 %)	21
2004	52	11,5 (from ~ 14, means ~ 82 %)	22
2005	57	11,5 (from ~ 14, means ~ 82 %)	20
2006	57	11,5 (from ~ 14, means ~ 82 %)	20
2007	51	11,5 (from ~ 14, means ~ 82 %)	23
2008	51	11,5 (from ~ 14, means ~ 82 %)	23
2009	55	11,5 (from ~ 14, means ~ 82 %)	21
2010	45	11 (from ~ 14, means ~ 79%)	24
2011	50		

Problems of the Asphalt Industry

- More than 50 % of the production is produced from September to December
- Bitumen supply (especially during production peaks)
- CO₂ emission trade system
- Costs: bitumen, energy, aggregates ...

Future trends

- low temperature asphalt
- porous asphalt and other noise reducing pavements
- generally: lowering the emissions during production and laying and improving the effectiveness of energy consumption
- Recycling
- Quality
- Asphalt in cities

Questions? Statements?