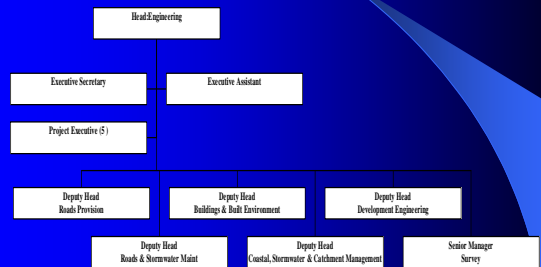


ENGINEERING UNIT

PROCUREMENT & INFRASTRUCTURE CLUSTER

Head:Engineering - Adrian Peters PrEng
 Tel 3002003, Fax 3056952, cell 0833090211, e-mail: petersam@cesu.durban.gov.za

STRUCTURE



ROADS PROVISION

- What do we do?
 - Design & build new roads, civil structures, footpaths & sidewalks
 - Rehabilitate existing roads
 - Maintain existing road structures
 - Prioritise rehabilitation through the development & maintenance of a Pavement Management System



CHALLENGES FOR DELIVERY

- Balancing maintenance & rehabilitation needs with the development of new roads.
- Long term funding needs & appropriate financing of road development and maintenance.
- Appropriate standards
- Recruitment of suitably skilled personnel
- Balancing the development of new & emerging contractors whilst maintaining delivery
- Adoption of new technologies to reduce costs/improve performance/lessen environmental impacts

Network Length by Road Type

Pavement Type	eThekwini	SANRAL	KZN
Block	66	0	0
Concrete	80	0	0
Flexible	6097	345	939
Total	6243	345	939
Formal Unsurfaced	1352		

Network Length by Road Classification

Road Category	Length (km)
A	85
B	1442
C	1073
D	3643
Total	6243

Budgets 2011/12

- Sidewalks R17.1m
- Pedestrian Bridges R4.0m
- Gravel to Surfaced Upgrades R81.67
- Minor Road Improvements R20m
- Major Road Upgrades R151m
- Road Rehabilitation R410m